



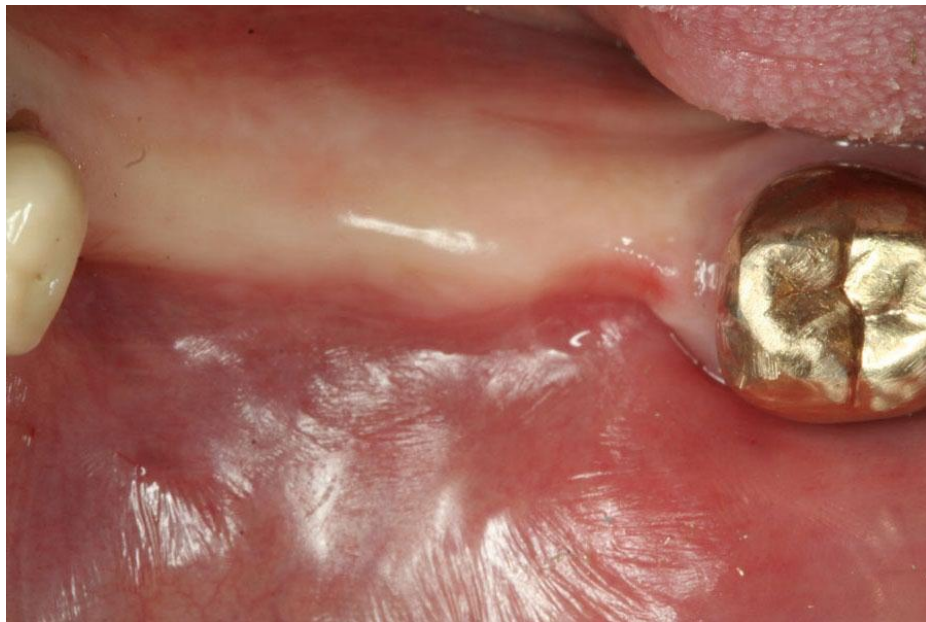
Case Study

Immediate Placement and Provisionalization of Two Zimmer® Trabecular Metal™ Dental Implants in the Left Mandibular Posterior Jaw: One-Year Follow-up after Definitive Restoration

Author: Dr. Markus Schlee (Germany)



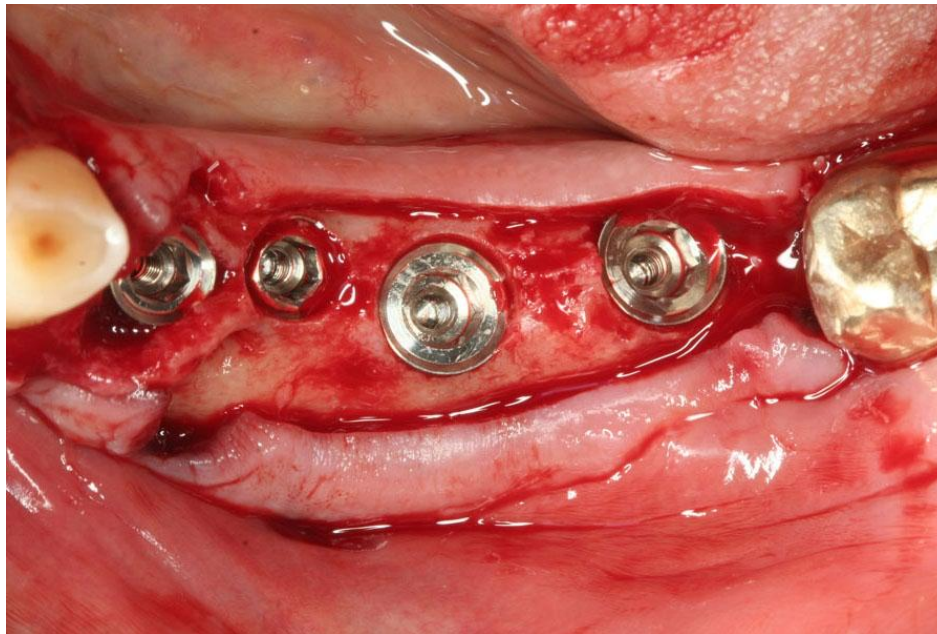
Case Study Dr. Markus Schlee



Pre-operative occlusal view of the left edentulous mandibular posterior ridge.



Case Study Dr. Markus Schlee



After surgical exposure and sequential preparation of the osteotomies using graduate drills and copious internal and external irrigation, two *Zimmer® Trabecular Metal™* Dental Implants, 4.7 mm x 10 mm, and two *Zimmer® Trabecular Metal™* Dental Implants, 6.0 mm x 10 mm, were placed according to the Instructions For Use.



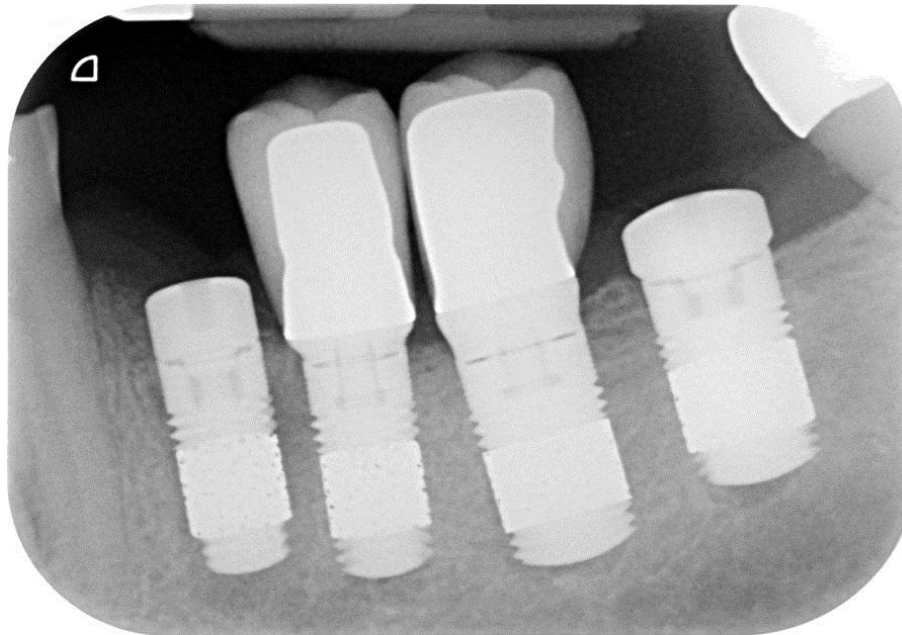
Case Study Dr. Markus Schlee



Two implants were immediately provisionalized and definitively restored after two weeks with fully occluding, ceramometal restorations. Healing collars were placed on the most mesial and distal implants at the time of surgery for one-stage healing.



Case Study Dr. Markus Schlee



Radiograph shows all four implants in place, with two immediately loaded implants that were definitively restored at two weeks.



Case Study Dr. Markus Schlee



Occlusal view of all four definitively restored implants after one year of function.



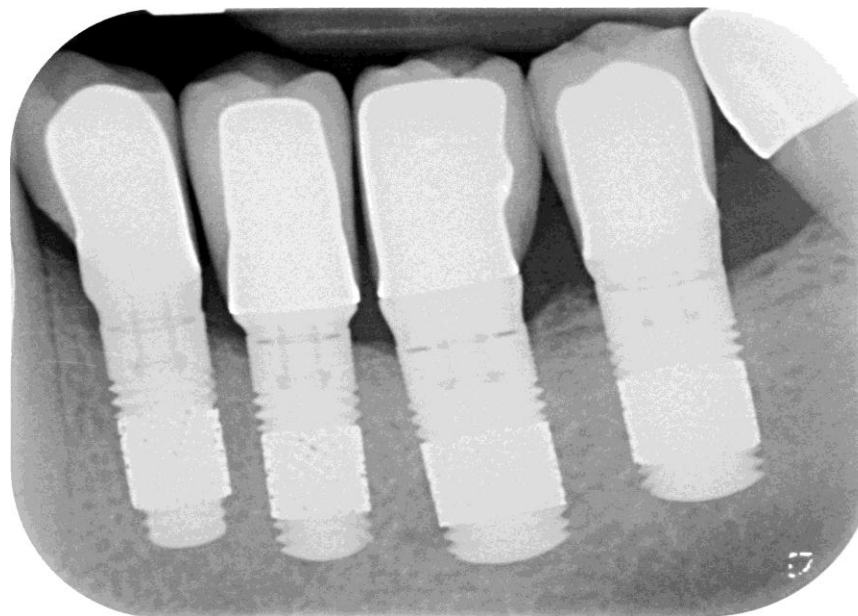
Case Study Dr. Markus Schlee



Buccal view of four definitively restored implants shows excellent esthetics and soft tissue health after one year of function.



Case Study Dr. Markus Schlee



Radiograph after one year of function shows stable marginal bone levels.